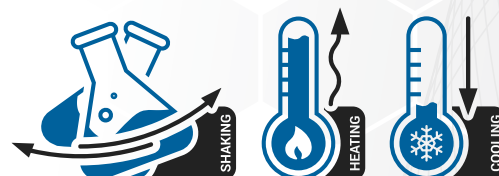
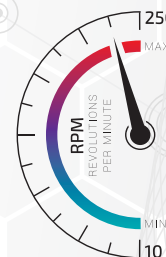


## 150L SHAKING COOLED INCUBATOR

Model: 355



## FEATURES

- The unit is ideal for a wide variety of laboratory experimentation in fields such as molecular biology, plant and animal cell culture and microbiology
- Electronic P.I.D temperature control with digital indication of set and process value
- High accuracy PT 100 temperature sensor
- Solid state control relay for optimum reliability and rapid response
- Micro processor based speed control for high stability with digital indication of RPM
- 120 minute timer with infinity override position for continuous operation if required
- Supplied with one chrome plated shelf and a shaking platform (size 480mm x 380mm) with four adjustable clamping bars
- 30kg load capacity
- Forced air circulation for excellent temperature uniformity
- Grade 304 stainless steel interior
- Loose rubber mat fitted to platform
- Safety cut out on the shaking platform when door is opened
- Fully adjustable shelf heights
- Glass viewing door fitted with light
- Temperature range 0°C to 60°C @ 25°C Ambient
- Temperature Variation across chamber  $\pm 1^\circ\text{C}$
- Reliable refrigeration system with high quality compressor and components
- Uses 132a refrigerant

### NOTE

- Flask holding clamps available as accessories



ALL SCIENTIFIC EQUIPMENT COMES WITH A TWO  
YEAR WARRANTY ON COMPONENTS AND  
DEFECTIVE WORKMANSHIP - Ts & Cs APPLY.

[www.scientific.co.za](http://www.scientific.co.za)

## 150L SHAKING COOLED INCUBATOR

Model: 355

### SPECIFICATIONS

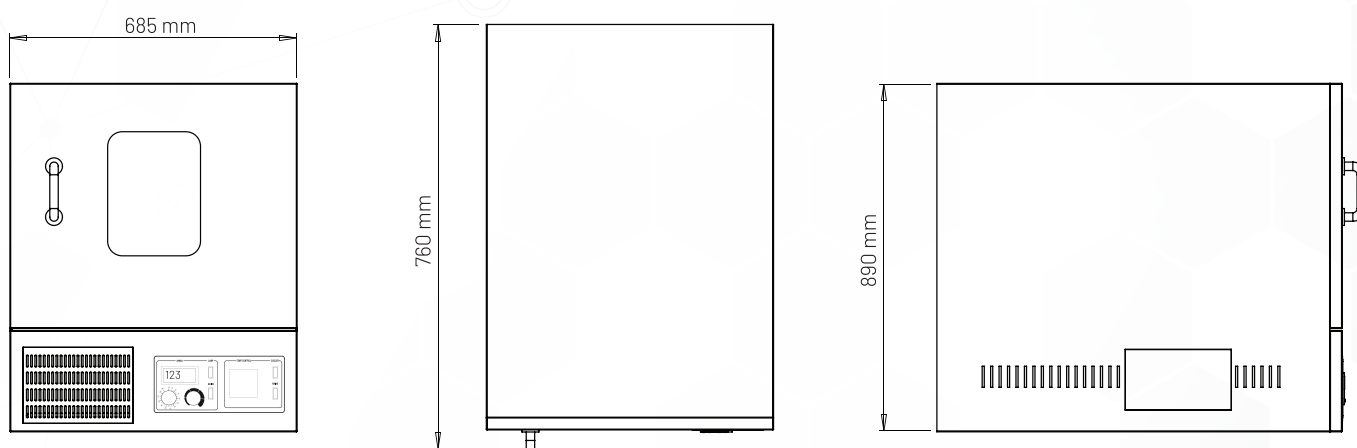
POWER	1100W
VOLTAGE	230V / 50Hz
PACKAGING (W x D x H)	800 x 800 x 1080 (mm)
UNIT (W x D x H)	685 x 760 x 890 (mm)
NET WEIGHT	98kg
GROSS WEIGHT	108kg
SHIPPING VOLUME	0.69m <sup>3</sup>
CHAMBER DIMENSIONS	595 x 495 x 495 (mm)
CHAMBER VOLUME	150ℓ
SHELF CAPACITY	5 with 50mm spaces
RPM	10-250

### OPTIONAL EXTRAS

CODE	DESCRIPTION
358	Extra chrome plated wire shelf
359	Inner glass door
269A	50ml Flask Clamp (Capacity 30)
269B	125ml Flask Clamp (Capacity 30)
269C	250ml Flask Clamp (Capacity 20)
269D	500ml Flask Clamp (Capacity 10)
269E	1000ml Flask Clamp (Capacity 4)
269F	2000ml Flask Clamp (Capacity 2)

#### NOTE

Double platform available on request



#### NOTE

- When viewing the appliance from the front in its usual operating position, the width (W) of the product is the total distance from left to right; the depth (D) of the product is the total distance from the front to the back; the height (H) is the total distance from the bottom of the product to the top. Pictures may vary from actual product.

#### DISCLAIMER

- Output performance figures quoted are dependant on various factors. Scientific reserves the right, without notice, to make changes and revisions to product specifications, materials and design, when we believe it will provide better performance, durability, and efficiency. Unit measurements may vary depending on point of reference.

#### WARRANTY

- All Scientific equipment comes with a standard ONE year warranty. The 1 Year Extended Warranty is only valid for customers who have registered their warranty online at [www.scientific.co.za](http://www.scientific.co.za) within the first year after making their purchase.