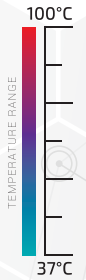
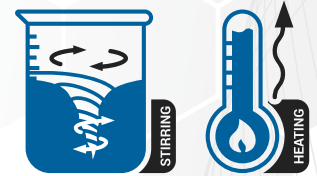


## DIGITAL CIRCULATOR

Model: 103



## FEATURES



- The Scientific laboratory circulator is designed to complement the range of waterbaths and accessories requiring a high degree of temperature control accuracy
- Powerful circulation pump to ensure uniform temperature distribution within the bath
- Suitable for pumping low viscosity media such as water
- Rear panel mounted safety fuse
- High quality, incoloy immersion heating element
- All body parts and pump manufactured from grade 304 stainless steel
- Separate main switch, control pilot light and heat switch
- External pump port capable of pumping 6 litres p/min @ 1M head
- Electronic P.I.D temperature control with digital indication of set and process value
- High accuracy PT 100 temperature sensor
- Solid state control relay for optimum reliability and rapid response
- Float switch safety prevents damage to the heating element
- Temperature Variation  $\pm 1^{\circ}\text{C}$
- Gravity pump action only
- Operating temperatures based on an ambient of  $25^{\circ}\text{C}$
- Temperature range  $37^{\circ}\text{C}$  to  $100^{\circ}\text{C}$



ALL SCIENTIFIC EQUIPMENT COMES WITH A TWO  
YEAR WARRANTY ON COMPONENTS AND  
DEFECTIVE WORKMANSHIP - Ts & Cs APPLY.

[www.scientific.co.za](http://www.scientific.co.za)

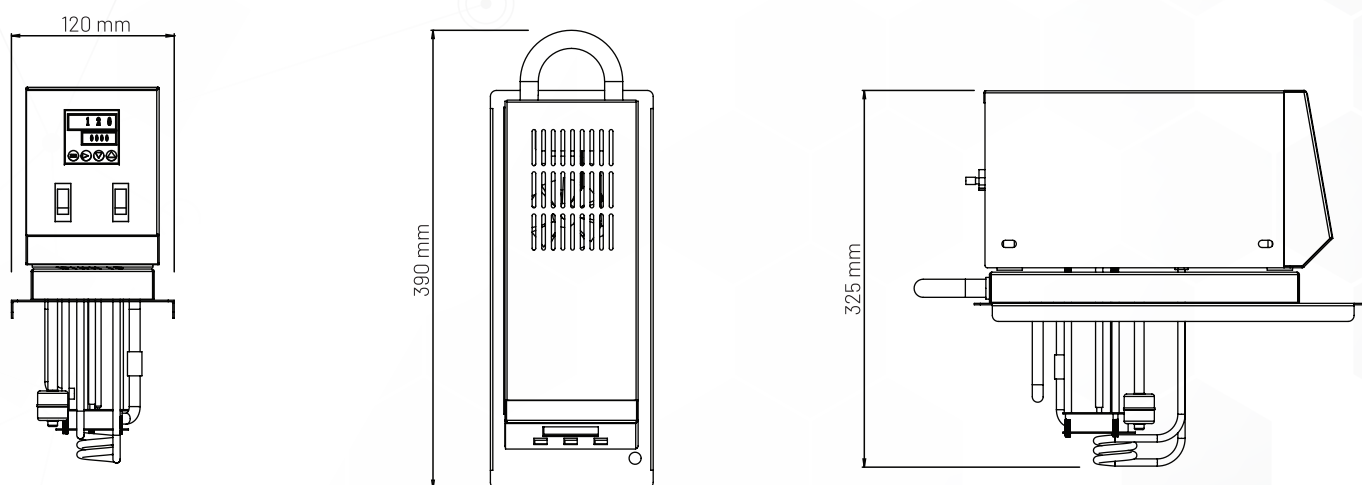


## DIGITAL CIRCULATOR

Model: 103

## SPECIFICATIONS

POWER	1200W
VOLTAGE	230V / 50Hz
PACKAGING (W x D x H)	425 x 415 x 180 (mm)
UNIT (W x D x H)	120 x 390 x 325 (mm)
NET WEIGHT	4.5kg
GROSS WEIGHT	5.5kg
SHIPPING VOLUME	0.03m <sup>3</sup>
MAX TEMPERATURE	100°C
PUMP CAPACITY @ 1m HEAD	6 l/min



### NOTE

- When viewing the appliance from the front in its usual operating position, the width (W) of the product is the total distance from left to right; the depth (D) of the product is the total distance from the front to the back; the height (H) is the total distance from the bottom of the product to the top. Pictures may vary from actual product.

### DISCLAIMER

- Output performance figures quoted are dependant on various factors. Scientific reserves the right, without notice, to make changes and revisions to product specifications, materials and design, when we believe it will provide better performance, durability, and efficiency. Unit measurements may vary depending on point of reference.

### WARRANTY

- All Scientific equipment comes with a standard ONE year warranty. The 1 Year Extended Warranty is only valid for customers who have registered their warranty online at [www.scientific.co.za](http://www.scientific.co.za) within the first year after making their purchase.